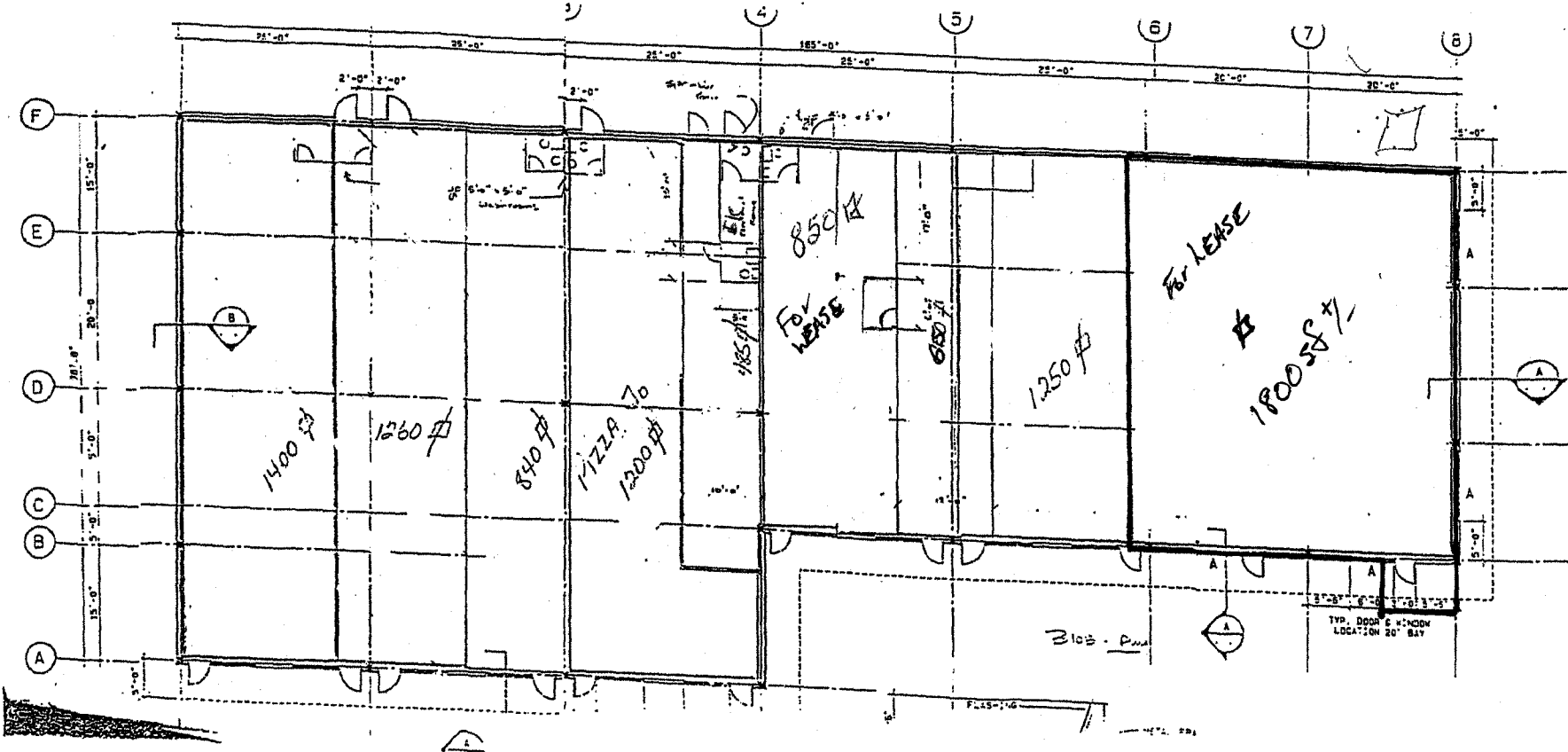


# 971 COLBY



COLE HARBOUR ROAD

Hugh Allen DRIVE

HUGH ALLEN DRIVE

NO PARKING

-70'-

45'-0"

-25'-

-75'-

CANOPY

BUILDING AREA  
9750 sq. ft.

-165'-

20'-0"

20'-0"

20'-0"

235'-0"

-90'-

FOUNDATION LINE

200'-0"

PARKING=54CARS=  
E. 54CARS/1000sq. ft.

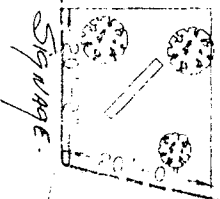
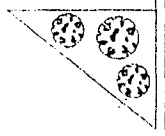
-50'-

NO PARKING

20'-0"

23'-0"

20'-0"



84'-0"

133'-0"

-25'-

COLE HARBOUR

